

Caring for Your Catheter

Changing Your Injection Cap

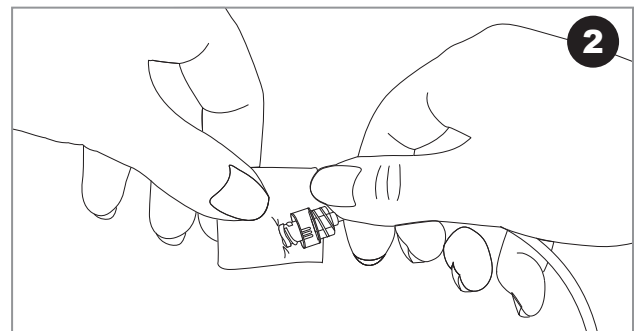
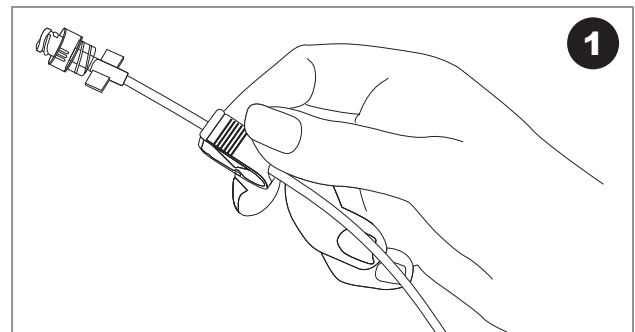
The injection cap is put on the end of your catheter. It is used to connect tubing and syringes to your IV catheter. The injection cap will need to be changed on a regular basis. Your nurse will tell you how often you should change this cap.

Before You Begin

1. *Wash your hands thoroughly.*
2. *Prepare a clean workspace.*
3. *Gather the following supplies:*
 - *Pre-packaged injection cap*
 - *Antiseptic swabs*

Basic Steps

1. Close the clamp on your catheter.
NOTE: DO NOT clamp if it is a Groshong® catheter. It will cause the valve to open and allow blood to back up into the catheter.
2. Holding the connection in one hand, wipe the area where the injection cap connects to the catheter thoroughly with an antiseptic swab for a minimum of **15 seconds** and allow it to dry.



3. Open the package containing the new injection cap. Pick up the new cap by the protective cover.
4. Remove the protective cover from the base of the new injection cap. Be careful not to touch the sterile end of the injection cap with your fingers.
5. Follow these steps to change the injection cap:
 - Hold the new cap between your fingers with one hand, sterile end up.
 - Disconnect the old cap from your catheter with the other hand. Do not touch the sterile end of the catheter (fig. 1).
 - Securely connect the new cap to the end of the catheter. Do not touch the sterile end of the new cap or end of the catheter (fig. 2).
6. If your catheter has more than one lumen, you will need to change the injection cap to each lumen.

TIP: If you are changing multiple injection caps, change them in alphabetical “color” order. For example:

- **B** = Brown
 - **R** = Red
 - **W** = White
- This will help you remember which caps you have already changed so you don’t forget to change one.

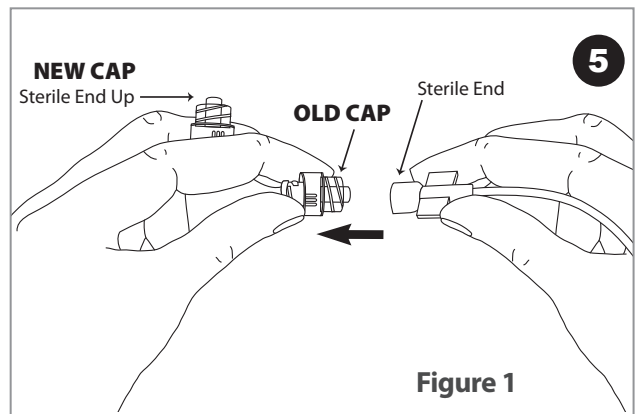
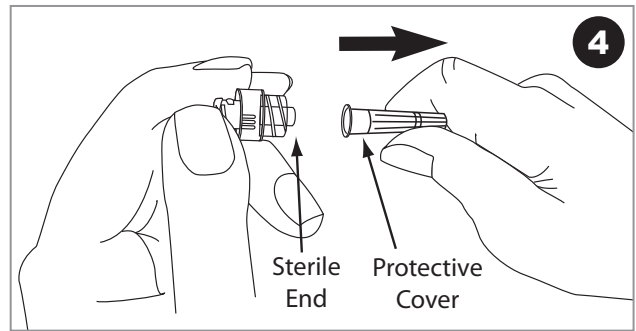
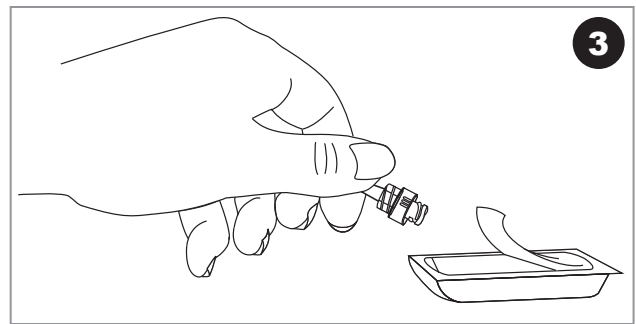


Figure 1

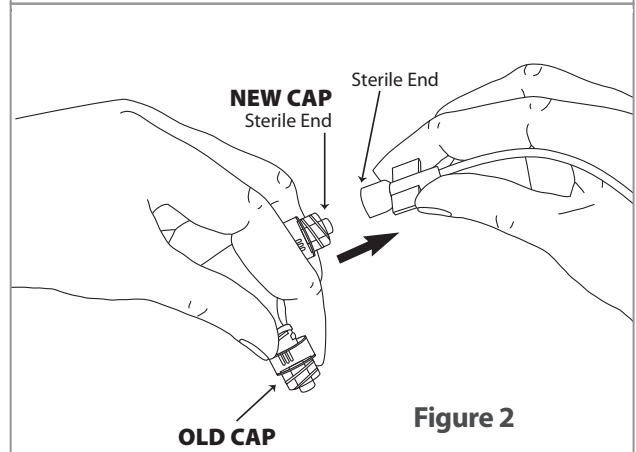


Figure 2